

Installation guide & Product Information

WOHNHELD Kitchen roll holder



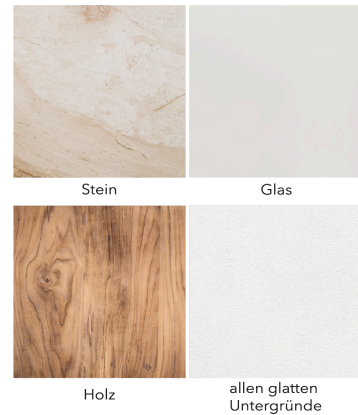
Table of contents

Scope of delivery	2
General	2
Security	3
Commissioning	4
Technical data	5

Quick guide

must be able to be used following substr
Kitchen roll holder can be screwed:

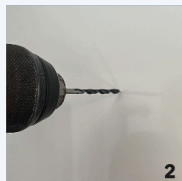
You glue the kitchen roll holder:



Schrauben



Positionieren Sie den Rollhalter an der gewünschten Position und zeichnen Sie die Bohrlöcher an.

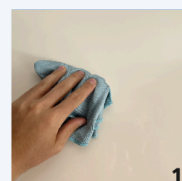


Bohren Sie an den markierten Stellen zwei kleine Löcher für die Schrauben vor.

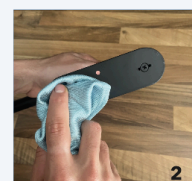


Befestigen Sie den Rollhalter mit den beiden Schrauben und montieren Sie anschließend noch die Schraubenabdeckungen.

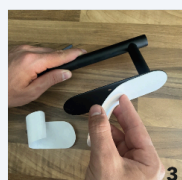
Kleben



Wischen Sie den Bereich, auf dem der Rollhalter montiert werden soll, gründlich mit einem trockenen Tuch ab.



Wischen Sie den Rollhalter auf der Unterseite mit einem trockenen Tuch gründlich ab.



Kleben Sie das doppelseitige Klebeband zuerst auf die Unterseite des Rollhalters.

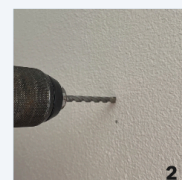


Kleben Sie den Rollhalter nun auf die gewünschte Stelle und drücken Sie ihn für mind. 30 Sekunden an.

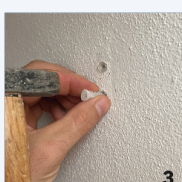
Dübel & Schrauben



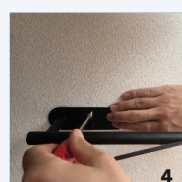
Positionieren Sie den Rollhalter an der gewünschten Position und zeichnen Sie die Bohrlöcher an.



Bohren Sie die Löcher für die Dübel an den markierten Stellen mit einem 7 mm Bohrer.



Setzen Sie die beiden Dübel in die Löcher ein und achten Sie darauf, dass sie nicht überstehen.



Befestigen Sie den Rollhalter mit den beiden Schrauben und montieren Sie anschließend noch die Schraubenabdeckungen.

Scope of delivery

- 1 x Kitchen roll holder with roll-off bracket
- 2 x double-sided adhesive tape for mounting the kitchen roll holder
- 2 x dowel
- 2 x screws
- 2 x screw cover
- 1 x silicone sticker for the roll-off brake
- 1 x accompanying card

General



Read the operating instructions.

This instruction manual belongs to the kitchen roll holder from WOHNHELD.

It contains important information on commissioning and

Handling. Failure to observe these operating instructions may result in
cause damage to the product.

Explanation of symbols

The following symbols and signal words are used in these operating instructions.

NOTE - This signal word warns of possible damage to property.



This symbol gives you useful additional information on operation or handling.



Regulation (EC) No. 1907/2006 (REACH Regulation) is an EU chemicals regulation that came into force on June 1, 2007. REACH stands for Registration, Evaluation, Authorization and Restriction of Chemicals. As an EU regulation, REACH has equal and directly applicable in all member states.

Copyrights

Passing on and copying of this document, utilization and communication of its contents are prohibited unless expressly permitted. Violations oblige to compensation. All rights reserved in the case of patent or utility model.

Security

Intended use

The kitchen roll holder is designed exclusively for unrolling kitchen rolls.

Use the kitchen roll holder only as described in this manual.
described in the operating instructions. Any other use is considered improper
and can lead to property damage. The kitchen roll holder is not a child's toy.

The manufacturer or distributor accepts no liability for damage caused by
are caused by improper or incorrect use.

Safety instructions



NOTE: Do not attempt to bend the unwinding bracket. This may cause it to break.

Commissioning



NOTE: Use the double-sided tape for mounting only on smooth surfaces (e.g. Smooth wood, glass, metal, most plastics, stone and tiles).

Attachment by means of double-sided adhesive tape:

- Open the product package and take your product out of the package.
- Choose a suitable place with a smooth surface.
- Thoroughly clean the surface on the kitchen roll holder where the double-sided tape is to be applied with a dry cloth.
- Remove the film on one side of the double-sided tape.
- Stick the double-sided tape with the adhesive surface on the kitchen roll holder.
- Remove the second film on the double-sided tape.
- Now press the kitchen roll holder on the plate with moderate pressure for 60 seconds.
- If you like, you can stick the enclosed silicone sticker to the front end of the roll-off brake. This makes it less sharp-edged and the roll-off resistance is slightly stronger.
- The kitchen roll holder is now ready for use.



NOTE for mounting by means of screws:

If you need shorter screws for mounting, you are welcome to contact at info@wohnheld.eu. We will be very happy to send you a shorter screw set including covers free of charge.

Attachment by means of screws:

- Open the product package and take your product out of the package.
- Choose a place where you can screw the kitchen roll holder.
- Position the kitchen roll holder in the desired location and secure it with the two screws.
- Take the two screw covers and screw them onto the screw heads.
- If you like, you can stick the enclosed silicone sticker to the front end of the roll-off brake. This makes it less sharp-edged and the roll-off resistance is slightly stronger.
- The kitchen roll holder is now ready for use.

Attachment by means of dowels and screws:

- Open the product package and take your product out of the package.
- Choose a place where you can drill holes for the dowels.
- Hold the kitchen roll holder in the predicted place and mark the two holes for the dowels with a pencil.
- Drill two holes for the dowels using a drill bit (diameter: 7 mm).
- Insert the dowels completely into the drill holes.
- Take the two screws and screw the kitchen roll holder with the help of the dowels.
- Take the two screw covers and screw them onto the screw heads.
- If you like, you can stick the enclosed silicone sticker to the front end of the roll-off brake. This makes it less sharp-edged and the roll-off resistance is slightly stronger.
- The kitchen roll holder is now ready for use.

Technical data

Model: Kitchen roll holder
Device color: silver or gray
Weight: approx. 250 g
Size: 310 x 90 x 45 mm

Subject to technical and optical changes.

Customer Service / Customer Support

Dear customers,

our customer support staff will be happy to assist you. Please submit your concerns at:

info@wohnheld.eu

With kind regards
Your team from WOHNHELD